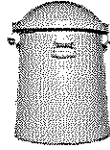


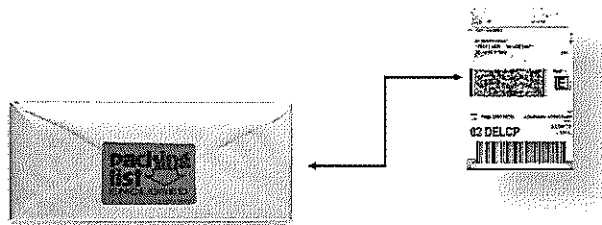
Instructions on returning dry shippers to SriSai Biopharmaceutical Solutions LLC



The Dry shipper you have received is property of SriSai Biopharmaceutical Solutions LLC and should be returned promptly after use. Below are instructions to guide in the prompt return of the shipper(s). If you have any questions about this process please do not hesitate to contact us. 301-846-0188 / shipping@srisaibiopharma.com

***** DO NOT ATTEMPT TO REMOVE DATA LOGGERS OR DOWNLOAD ANY INFORMATION. SBS WILL RETRIEVE ALL REQUIRED DATA LOGGER INFORMATION AND SEND TO APPROPRIATE PERSONNEL. *****

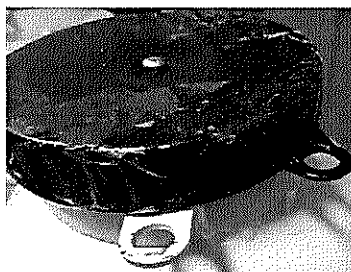
- I. Once you have completed use of the shipper, locate the FedEx return label that is included *inside* the packing list envelope. If you do not find a return label, please contact Sri Sai Shipping staff via email (shipping@srisaibiopharma.com) and request that a return FedEx label is forwarded to you as soon as possible.



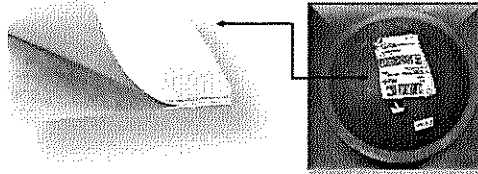
- II. Secure HOB0 data logger to the top of the inner black lid of the dry shipper with either tape or Velcro.



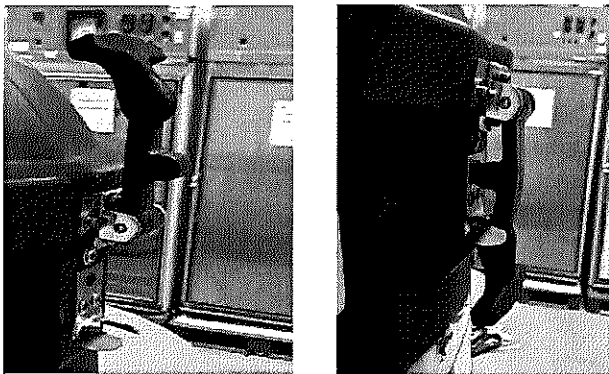
- III. Secure the inner black lid to the dry shipper using the (1) corresponding hole through both the dry shipper and inner black plastic lid with the supplied zip tie.



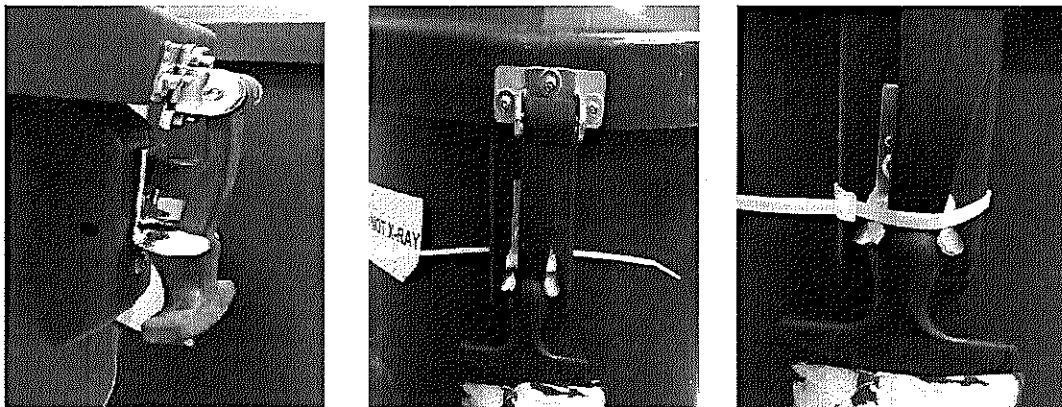
- IV. Remove the label from its protective backing and place on top of the shipper lid.



- V. Secure the shipper lid by locking the lid lock.



- VI. Also included in the packing list envelope will be an extra zip tie to further secure the shipper lid while it is in transit. Place the zip tie on the already locked lid lock of the shipper.



- VII. Contact FedEx to schedule a pick up from your facility. (800) 463-3339